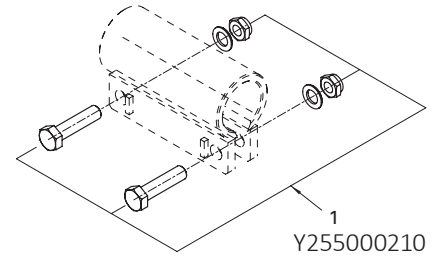
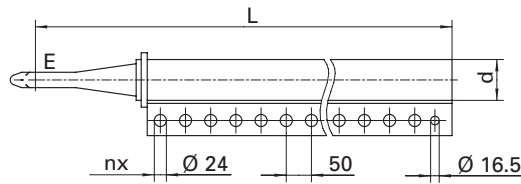
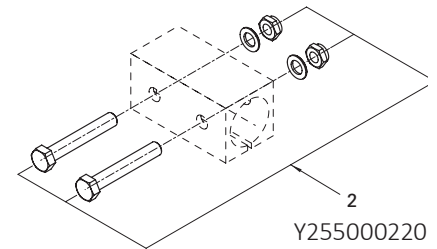
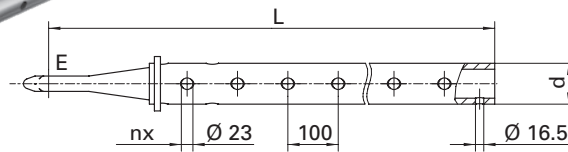


# GZL / GZLG



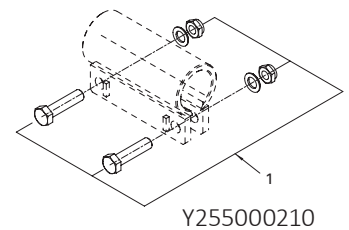
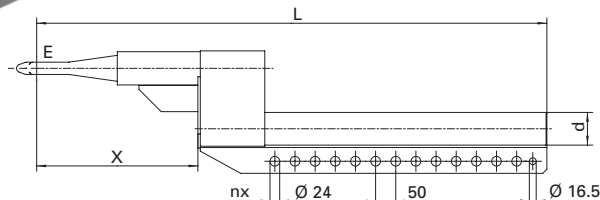
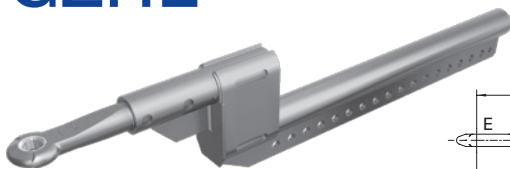
		V (mm)	nx	L (mm)	d (mm)	E (Zugöse • Drawbar eye • Anneaux de remorquage • Occhione di traino • Punta de lanza)
A	Y254000310	12x50	17	1120	81x11	40 DIN 74054
D	Y254000408	12x50	17	1120	81x16	50 ECE
C	Y254000340	12x50	17	1120	81x11	40 CH
S	Y254000409	12x50	17	1120	81x16	57 Skandinavien Zugöse • Skandinavian drawbar eye • Skand. anneau de remorquage • Skand. occhione • Punta de lanza Skand.
L	Y254000390	16x50	21	1320	81x19	40 DIN 74054
P	Y254000393	16x50	21	1320	81x19	40 CH
	Y254000382	12x50	17	1120	81x19	68 BNA

# GZU / GZHU



		V (mm)	nx	L (mm)	d (mm)	E (Zugöse • Drawbar eye • Anneaux de remorquage • Occhione di traino • Punta de lanza)	
P	Y254000830	5x100	7	975	81x19	40 DIN 74054	
A	Y254000700	6x100	8	1075	81x11	40 DIN 74054	A > 1900
K	Y254000800	6x100	8	1075	81x19	40 DIN 74054	A <= 1900
C	Y254000720	6x100	8	1075	81x19	50 ECE	
F	Y254000740	8x100	10	1275	81x19	40 DIN 74054	

# GZHL



		V (mm)	nx	L (mm)	d (mm)	E (Zugöse • Drawbar eye • Anneaux de remorquage • Occhione di traino • Pwwunta de lanza)	
A	Y254000420	12x50	17	1266	81x19	40 DIN 74054 (X = 200)	A <= 1250
C	Y254000430	12x50	17	1466	81x19	40 DIN 74054 (X = 400)	A > 1250

Weitere Ausführungen auf Anfrage. • More models upon request. • Informations supplémentaires sur demande. • Altre versioni su richiesta. • Más modelos sobre pedido.