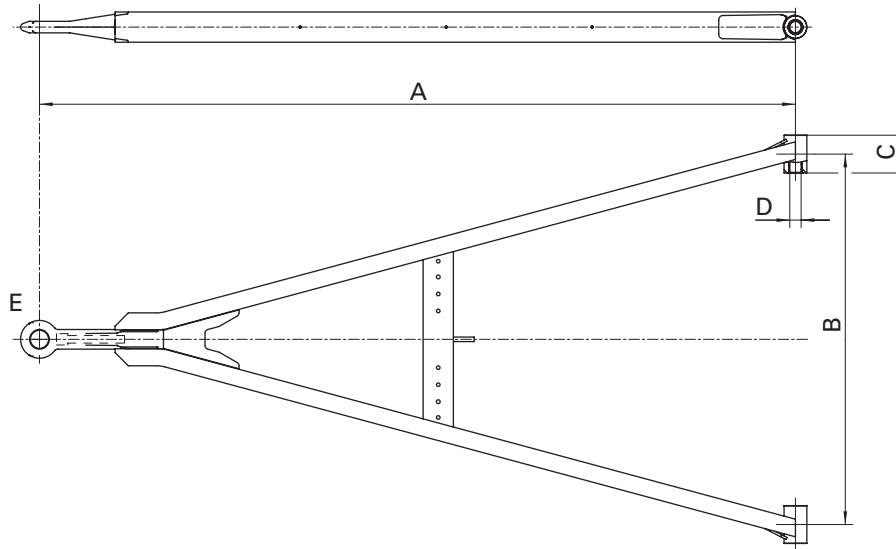


GNZ

- DE** Zuggabel Normalprofil
- EN** Drawbar standard profile
- FR** Flêche de remorque – profil standard
- IT** Timoni profilo normale
- ES** Perfil normal de la lanza-timón



A		R	Av	D	ECE	A	B	C	D	E	
A		(t)	(t)	(kN)		(mm)	(mm)	(mm)	(mm)		
YA	GNZ 9,4	9,4	5	70	E1 55R-01 1964	650-750	320-1100	60-100	20-50	1,6	U 50
YA	GNZ 9,4	9,4	5	70	E1 55R-01 1964	800-1950	320-1250	60-100	20-50	1,6	U 50
YD	GNZ 18	16	8	98	E1 55R-01 1911	1000-2600	320-410	60-100	24-50	1,3,4,5,6,C,A	U 65
YD	GNZ 18	18	10	98	E1 55R-01 1911	1000-1100	420-920	60-100	24-50	1,3,4,5,6,C,A	U 65
YD	GNZ 18	18	10	98	E1 55R-01 1911	1150-1200	420-1050	60-100	24-50	1,3,4,5,6,C,A	U 65
YD	GNZ 18	18	10	98	E1 55R-01 1911	1250-1400	420-1200	60-100	24-50	1,3,4,5,6,C,A	U 65
YD	GNZ 18	18	10	98	E1 55R-01 1911	1450-2600	420-1400	60-100	24-50	1,3,4,5,6,C,A	U 65
YG	GNZ 27	27	12	125	E1 55R-01 1909	1000-2050	320-1400	60-100	24-50	1,3,4,5,6,C	U 80
YG	GNZ 27	27	12	125	E1 55R-01 1909	2100-3100	320-1500	60-100	24-50	1,3,4,5,6,C	U 80
YF	GNZ 40 A	40	12	125	E1 55R-01 2001	1000-3800	320-590	70-100	26-50	1,6,C	U 100
YF	GNZ 40 A	40	12	125	E1 55R-01 2001	3350-3800	320-590	70-100	26-50	3,4,5	U 100
YF	GNZ 40 A	40	18	125	E1 55R-01 2001	1000-3800	600-1500	70-100	26-50	1,6,C	U 100
YF	GNZ 40 A	40	18	125	E1 55R-01 2001	3350-3800	600-1500	70-100	26-50	3,4,5	U 100
YF	GNZ 40 B	40	12	168	E1 55R-01 2021	1000-3300	320-590	70-100	26-50	3,4,5	U 100
YF	GNZ 40 B	40	18	168	E1 55R-01 2021	1000-3300	600-1400	70-100	26-50	3,4,5	U 100
YC	GNZ 50	50	18	190	E1 55R-01 2022	1200-3800	400-590	70-100	30-50	3,5	U 100
YC	GNZ 50	50	24	190	E1 55R-01 2022	1200-3800	600-1400	70-100	30-50	3,5	U 100
YB	GNZ 50 HD	60	24	206	E1 55R-01 2676	1600-3400	900-1400	70-100	30-50	3,5	U 100